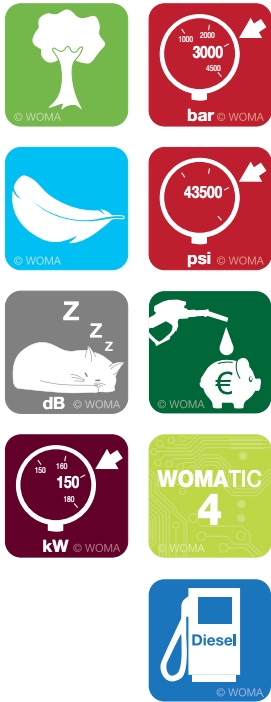


Ultra-high pressure water jetting technology
EcoMaster® MK3 3000 | 2800 | 2500

WOMA® Units



optional:



The Grandmaster

The MK3 is the Grandmaster of cleaning and maintenance of large civil projects and industrial plants. Its operating pressure can be increased from 36250 to 43500 psi/2500 to 3000 bar, a competitive advantage that is unparalleled in its class.

This system solution also unifies all the WOMA strengths. These include, for example:

- The easy-to-understand **WOMATIC 4** controller, which ensures a high degree of operational safety through operational status monitoring.
- The pressure-rpm regulation, which makes a reduction in fuel consumption by 30 % possible.
- The pressure-less circulation, which allows lower wear – and hence a longer life.

Depending on your individual requirements, we can supply the MK3 either diesel-powered or electrically powered, and as a stationary or a mobile unit. The system is equipped with a safety trough so that even if damaged, operating fluids are not released into the environment.

Overview



Ultra-high pressure water jetting technology
EcoMaster® MK3 3000 | 2800 | 2500

WOMA® Units

Technical Data

	EcoMaster® ¹⁾ MK 3 690.2405	EcoMaster® ¹⁾ MK 3 690.2104	EcoMaster® ¹⁾ MK 3 690.2104
Max. operating pressure	36250-40600 psi/ 2500- 2800 bar	36250 psi/ 2500 bar	43500 psi/ 3000 bar
Max. flow rate	20 l/min.*	26 l/min.*	18 l/min.*
High-pressure pump	WOMA® 150/185 M P 16	WOMA® 250 M P 18	WOMA® 250 M P 15
Power ²⁾	Iveco Diesel 130 kW	Iveco Diesel 130 kW	Iveco Diesel 130 kW
Fuel tank	200l* Diesel	200l* Diesel	200l* Diesel
Water tank	40l*	40l*	40l*
Noise level	≤ 85 dB(A)	≤ 85 dB(A)	≤ 85 dB(A)
H.P. connection	9/16-18 UNF LH	9/16-18 UNF LH	9/16-18 UNF LH
Empty weight	2310 kg	2310 kg	2310 kg
Dimensions ^{3), 4)} (L x W x H)	4100 x 1930 x 2000 mm	4100 x 1930 x 2000 mm	4100 x 1930 x 2000 mm

¹⁾ E-EXI-design also available as option.

²⁾ DEUTZ engine also available as option.

³⁾ Adjustable-height towing bar also available as option.

⁴⁾ Stationary or mobile.

* 1 liter ≈ 3.785 US.liq.gal

Standard accessories

- 1 x high-pressure gun, lance, nozzle connection and nozzle
- 1 x high-pressure hose 20 m
- 1 x cable reel with 30 m electric cable and plug

Recommended accessories

- 1 Swivel hose connection up to 43500 psi / 3000 bar
- 2 Speedy 3000, E 02, E 03, E 05, E 09
- 3 VacuJet 3000
- 4 Eco Top Rotating Cleaner for high surface production
- 5 ECO TOP Cutter 3000-EX
- 6 Wireless remote control, optional
- 7 Safety foot valve (EXI, BG-TEST-CERT)

This list is just a sample of our comprehensive range of accessories.



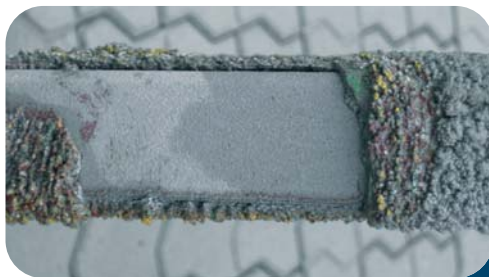
Ultra-high pressure water jetting technology
EcoMaster® MK3 3000 | 2800 | 2500

WOMA® Units

Highlights



- High system safety with the operational status monitoring system **WOMATIC 4**
- Long life and operating cost minimisation thanks to the pressure-rpm regulation, the pressure-less circulation and patented valve design
- Option for increasing the operating pressure from 36250 to 43500 psi / 2500 to 3000 bar
- Highest environmental standard in the form of the safety trough
- Flexibility due to stationary or mobile models and the option of IC engines or electric motors
- Low-noise operation provided by soundproofing hood made of aluminium (≤ 85 dB(A) in 7m)
- HP pump compliant with the ATEX standard
- EG Machinery Directive 2006/42/EG



Applications